



# Type Design in FontLab applications

A logo for the "Typographic Beirut 2005" exhibition. It features a stylized graphic of a building or structure in purple and black, with the text "TYPOGRAPHIC BEIRUT 2005" written in a bold, sans-serif font below it.

TYPOGRAPHIC  
BEIRUT  
2005



**Adam Twardoch**

Fontlab Ltd.

<http://www.fontlab.com>



# FONTLAB APPLICATIONS

- Started in **1992** by Yuri Yarmola, FontLab DG in St. Petersburg, Russia, worldwide sales: Pyrus NA, USA, led by Ted Harrison
- In 2000: Pyrus NA + FontLab DG = **Fontlab Ltd.**
- **Main products:**
  - TypeTool 2
  - TransType SE & TransType PRO
  - BitFonter 2
  - FontLab 4.6 / FontLab Studio 5 (soon)
  - AsiaFont Studio 4
  - Photofont Start (soon), FontFlasher, SigMaker, FONmaker, ...



# TYPETOOL 2

TypeTool 2

File Edit View Glyph Tools Window Help

Custom 363,-14 363,-14 0,0

Font - Baskerville Italic [D:\f\lib\maj\Bitstream\we\PS\b...

Name	Default Encoding						
P	Q	R	S	T	U	V	W
X	Y	Z	bracketleft	backslash	bracketright	asciicircum	underscore
X	Y	Z	[	\	]	^	_
grave	a	b	c	d	e	f	g
`	a	b	c	d	e	f	g
h	i	j	k	l	m	n	o
h	i	j	k	l	m	n	o
p	q	r	s	t	u	v	w
p	q	r	s	t	u	v	w
x	y	z	bracketleft	bar	bracketright	asciitilde	***
x	y	z					
Euro	***	quotingslba					rdbl
€		,					
circumflex	perthousand	Scaron	gui				
^	%oo	Š					
***	quoteleft	quoteright	qu				ash
	'	'					

Node Properties

Bezier curve #2

55 0

BCPs

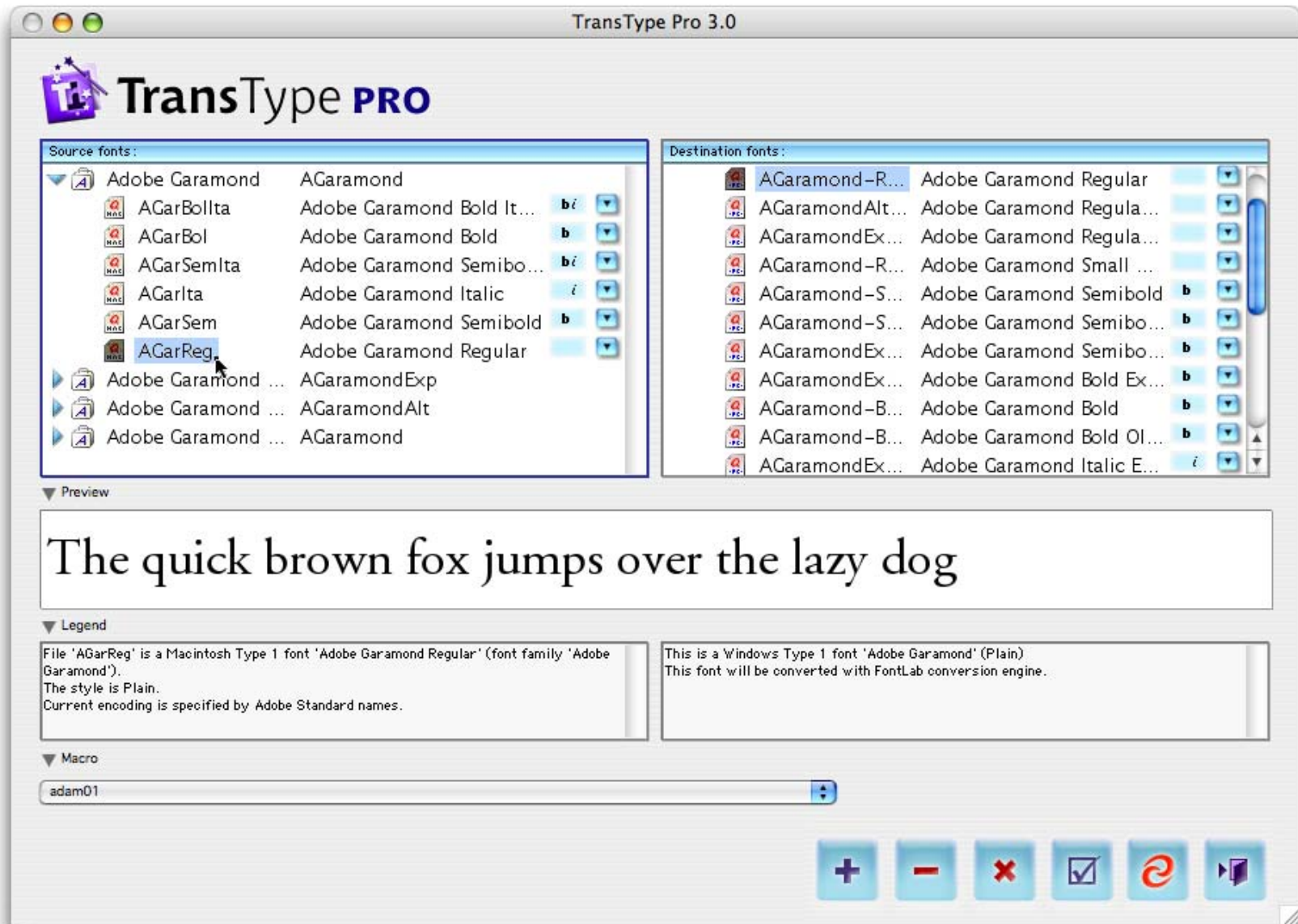
Selected

X: 363 Y: -14

Move objects by dragging them (left mouse button) or press right button to open popup menu



# TRANSTYPE SE & TRANSTYPE PRO





# BITFONTER 2

The screenshot displays the BitFonter 2 application interface. The top menu bar includes File, Edit, View, Font, Glyph, Operation, and Window. The toolbar contains various icons for file operations and font editing. The main window shows a font project named 'Arial.fnp' with a list of styles: Plain, Bold, Italic, and Bold Italic. The 'Plain' style is selected, and the font size is set to 16 Pixels, 4 Colors. The main display area shows a grid of glyphs, with the glyph 'a' (Unicode 0061) highlighted. Below the grid, the glyph 'a' is shown in a detailed view, displaying its 16x16 pixel grid structure. The glyph is rendered in a 4-color palette (black, white, gray, and light gray). The detailed view shows the glyph's bounding box and the individual pixels that form its shape.

003f	0040	0041	0042	0043	0044	0045	0046	0047	0048	0049	004a	004b	004c	004d	004e	004f	0050	0051	0052	0053
?	@	A	B	C	D	E	F	G	H	I	J	K	L	M	N	O	P	Q	R	S
0054	0055	0056	0057	0058	0059	005a	005b	005c	005d	005e	005f	0060	0061	0062	0063	0064	0065	0066	0067	0068
T	U	V	W	X	Y	Z	[	\	]	^	_	`	a	b	c	d	e	f	g	h
0069	006a	006b	006c	006d	006e	006f	0070	0071	0072	0073	0074	0075	0076	0077	0078	0079	007a	007b	007c	007d
i	j	k	l	m	n	o	p	q	r	s	t	u	v	w	x	y	z	{		}
007e	007f	20ac	0081	201a	0192	201e	2026	2020	2021	02c6	2030	0160	2039	0152	008d	017d	008f	0090	2018	2019
~	DEL	€	XXX	,	f	„	…	†	‡	^	%oo	Š	<	CE	Ri	Ž	ŠŠ	DGB	'	'
201c	201d	2022	2013	2014	02dc	2122	0161	203a	0153	009d	017e	0178	00a0	00a1	00a2	00a3	00a4	00a5	00a6	00a7

Size: 16x16 | Title: Unicode | Mode: Codepage | MS Windows 1252 Latin 1 | Glyphs: 1385, encoded: 218

Glyph: 'a' (0061)



# FontLab 4.6 / FontLab Studio 5

The screenshot displays the FontLab Studio 5 interface. The main window is titled "Font - Myriad Condensed [D:\...\Adobe Systems\]". The left sidebar contains a grid of glyphs, including various symbols like !, ", #, \$, %, &, ' and letters from A to Z. The central workspace shows a detailed view of the glyph "Euro from Myriad Condensed" (code point 291). The glyph is shown with its outline and control points, with a vertical dimension of 74.0 units. The bottom panel shows a "Preview/Metrics - Myriad Condensed" window with a list of glyphs: O, €, O, \$, O, ¥, O, H, €, H, \$, O, ¥, H. The preview shows these glyphs in a large font size. The bottom status bar indicates the current glyph is at index 291, 359, with a bounding box of X: 484, Y: 233.



## AVAILABILITY

- **FontLab Studio 5 for Windows: Q2/2005**
  - In development and private beta test since late 2003
  - In comprehensive external beta test since late 2004
  - Software already production-stable as of today: current version 5 beta used in actual production by several notable font manufacturers
  - Main reason why it is not yet released: documentation is still under development
- **FontLab Studio 5 for Mac OS X: Q4/2005**
- FontLab Studio supports up to 6,400 glyphs per font, TypeTool & AsiaFont Studio support up to 65,545 glyphs



## REFERENCES

- **FontLab 4.6 demo version and user's manual**  
<http://www.fontlab.com>
- **Tutorial slides**  
<http://www.fontlab.net/training>
- **Book “Learn FontLab Fast”** by Leslie Cabarga  
<http://www.logofontandlettering.com>
- **Comprehensive FontLab Studio 5 review**  
upcoming issue 14 of TYPO magazine  
<http://www.magtypo.cz>





# Type Design in FontLab applications

Adam Twardoch

Fontlab Ltd.

[adam@fontlab.com](mailto:adam@fontlab.com)